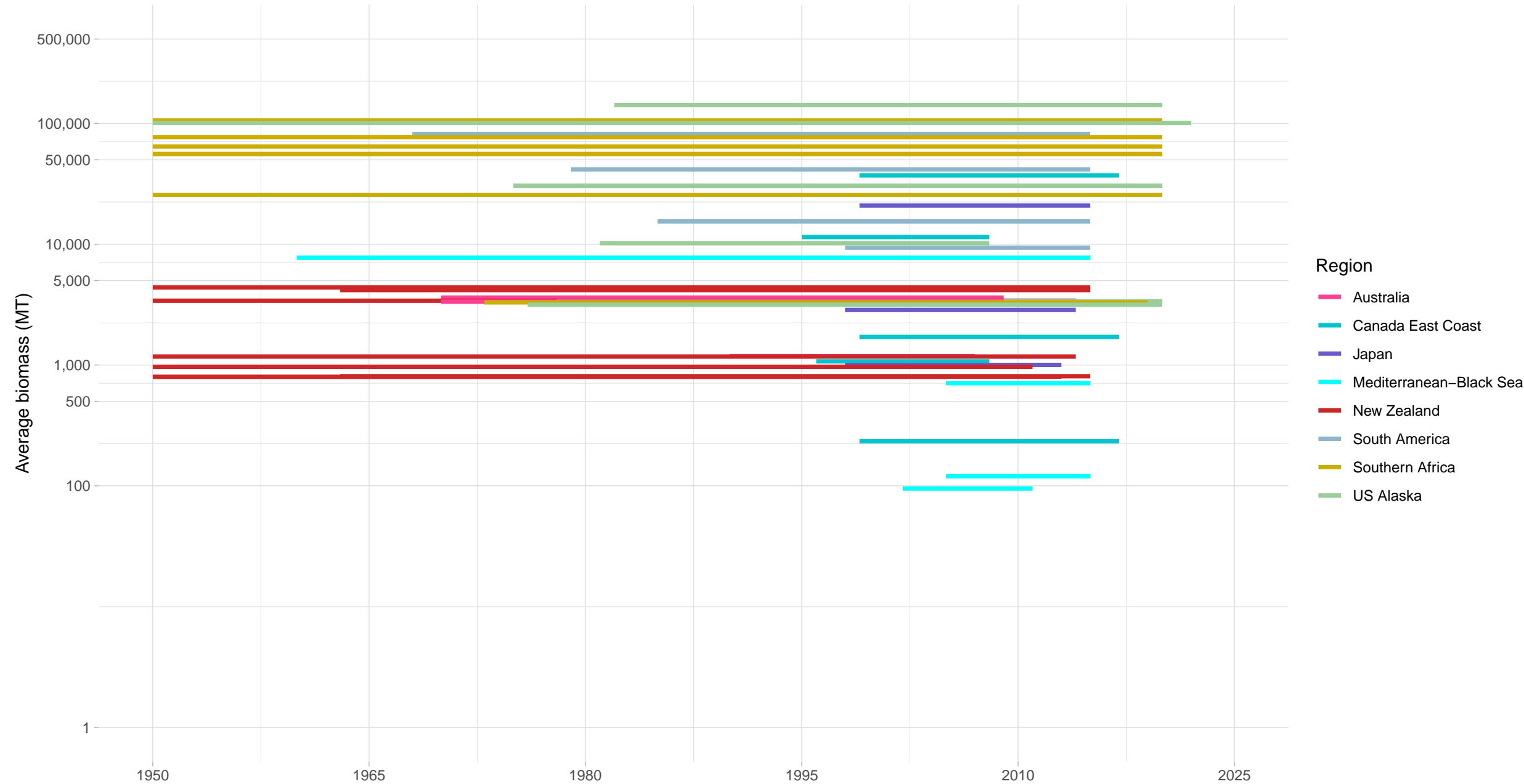
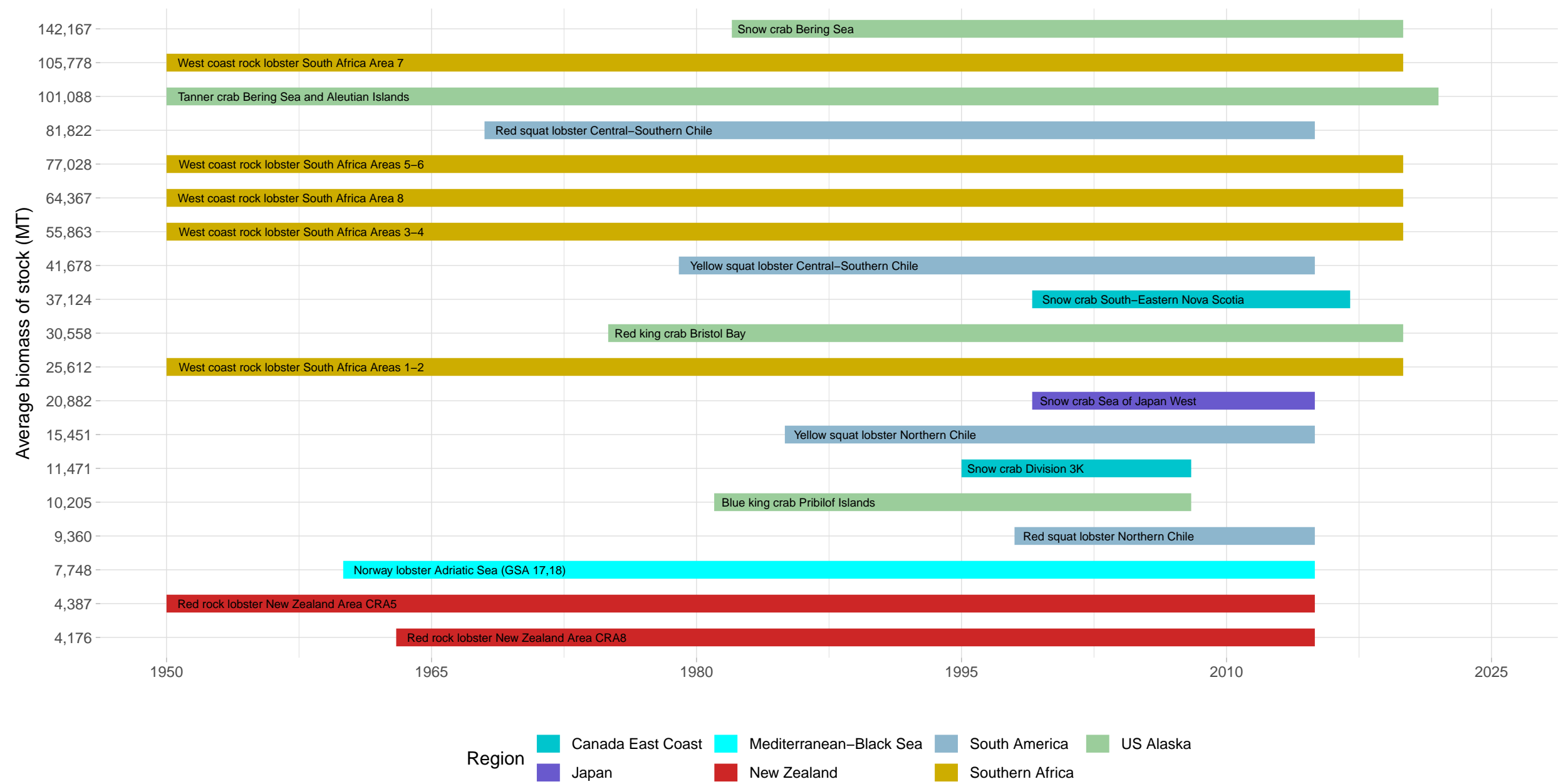


Biomass Coverage in Crabs–Lobsters Taxonomy Group



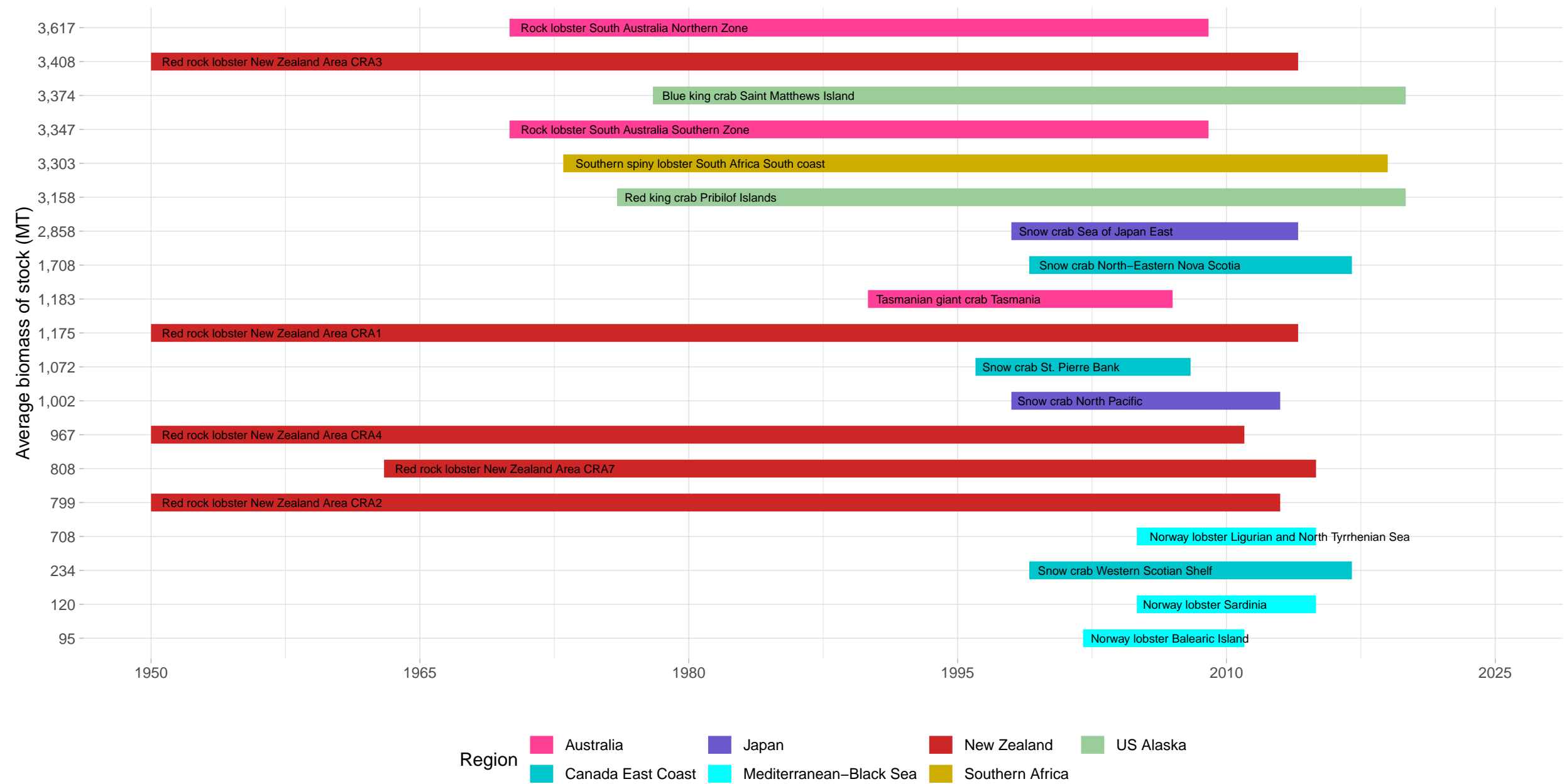
Biomass Coverage Over Time in Crabs–Lobsters Taxonomy Group

Stocks with highest average biomass



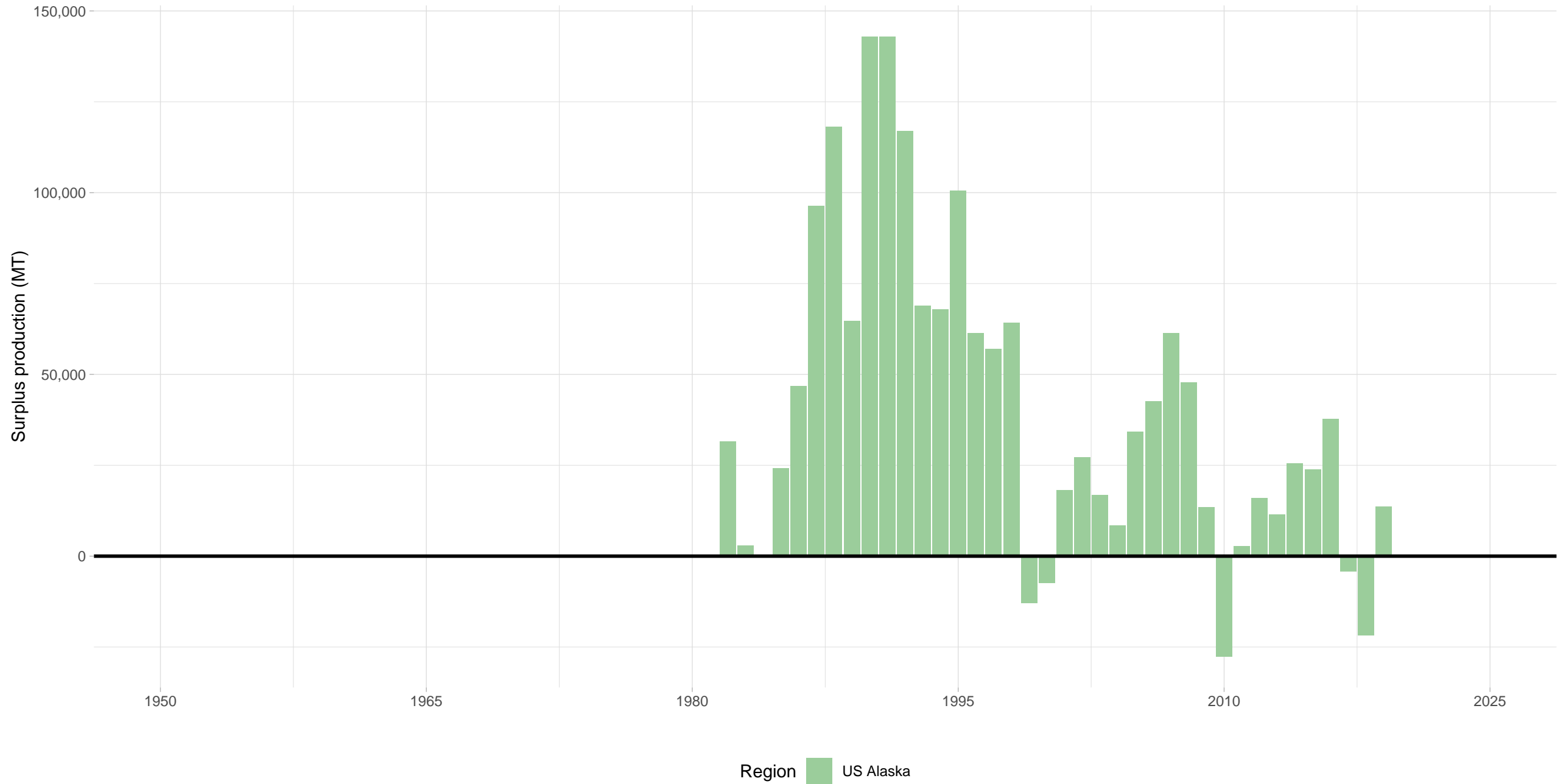
Biomass Coverage Over Time in Crabs–Lobsters Taxonomy Group

Stocks with lowest average biomass



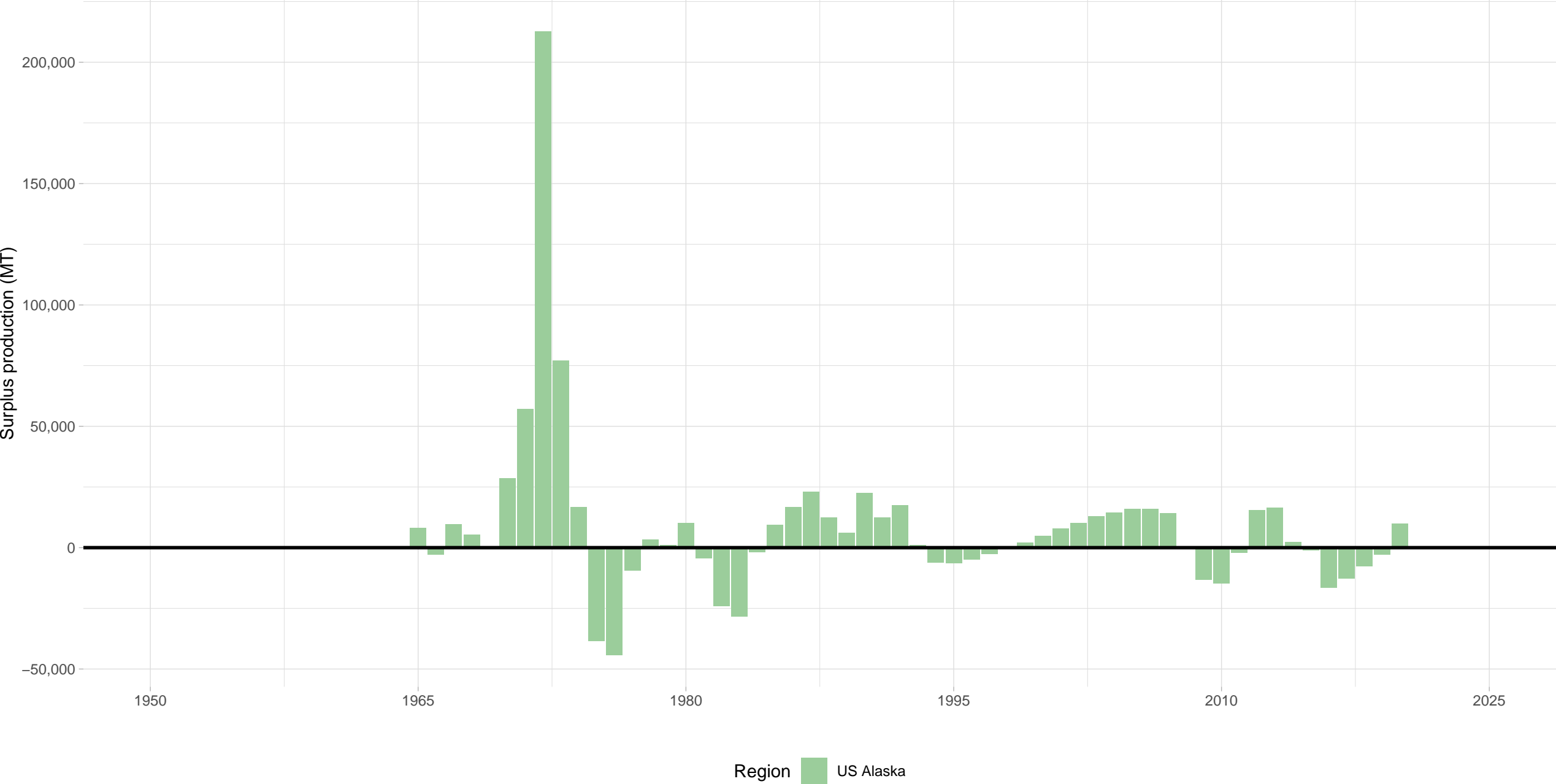
Snow crab Bering Sea – Crabs–Lobsters Taxonomy Group

Stock represents 30% of average absolute surplus production



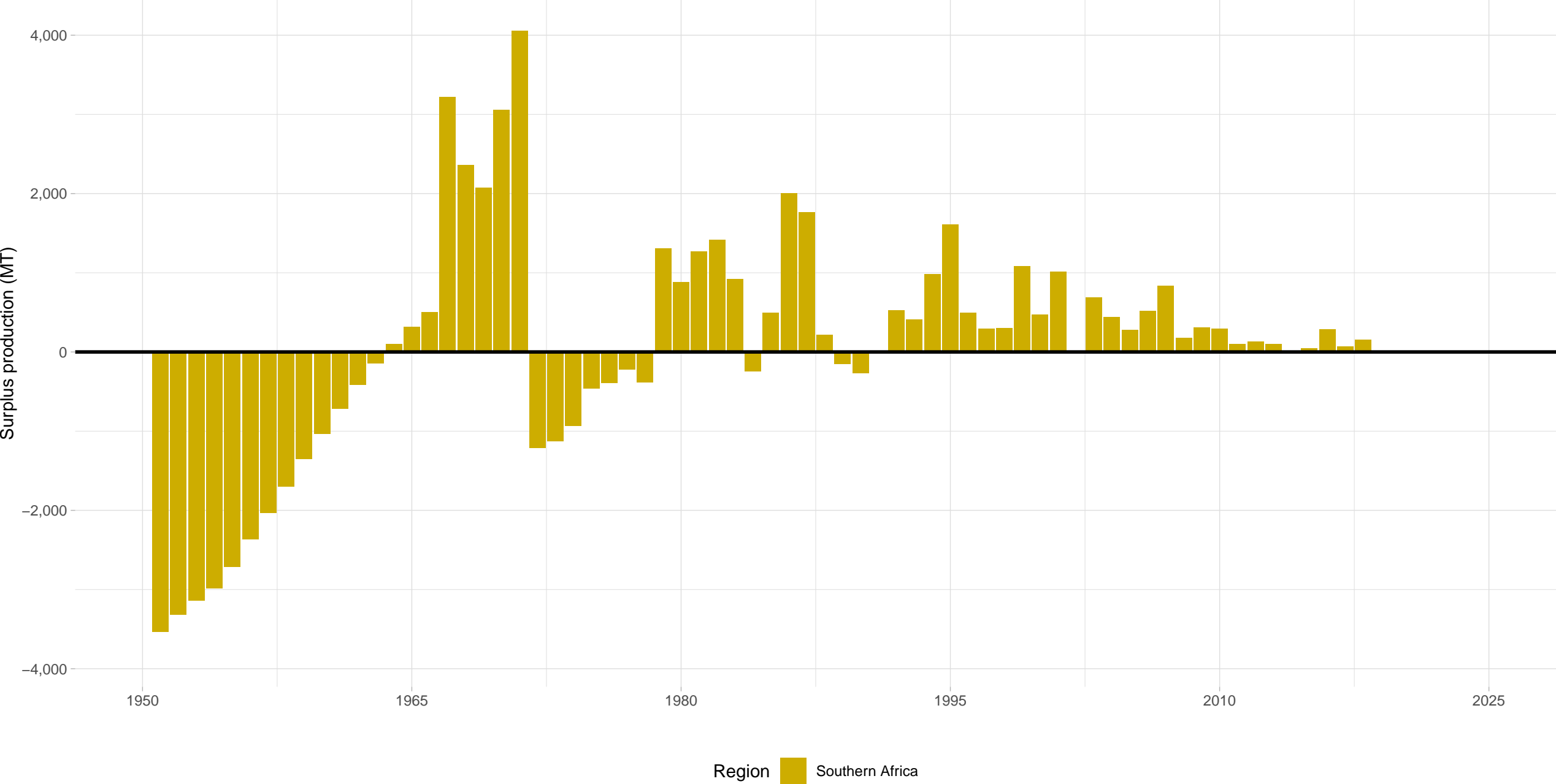
Tanner crab Bering Sea and Aleutian Islands – Crabs–Lobsters Taxonomy Group

Stock represents 12% of average absolute surplus production



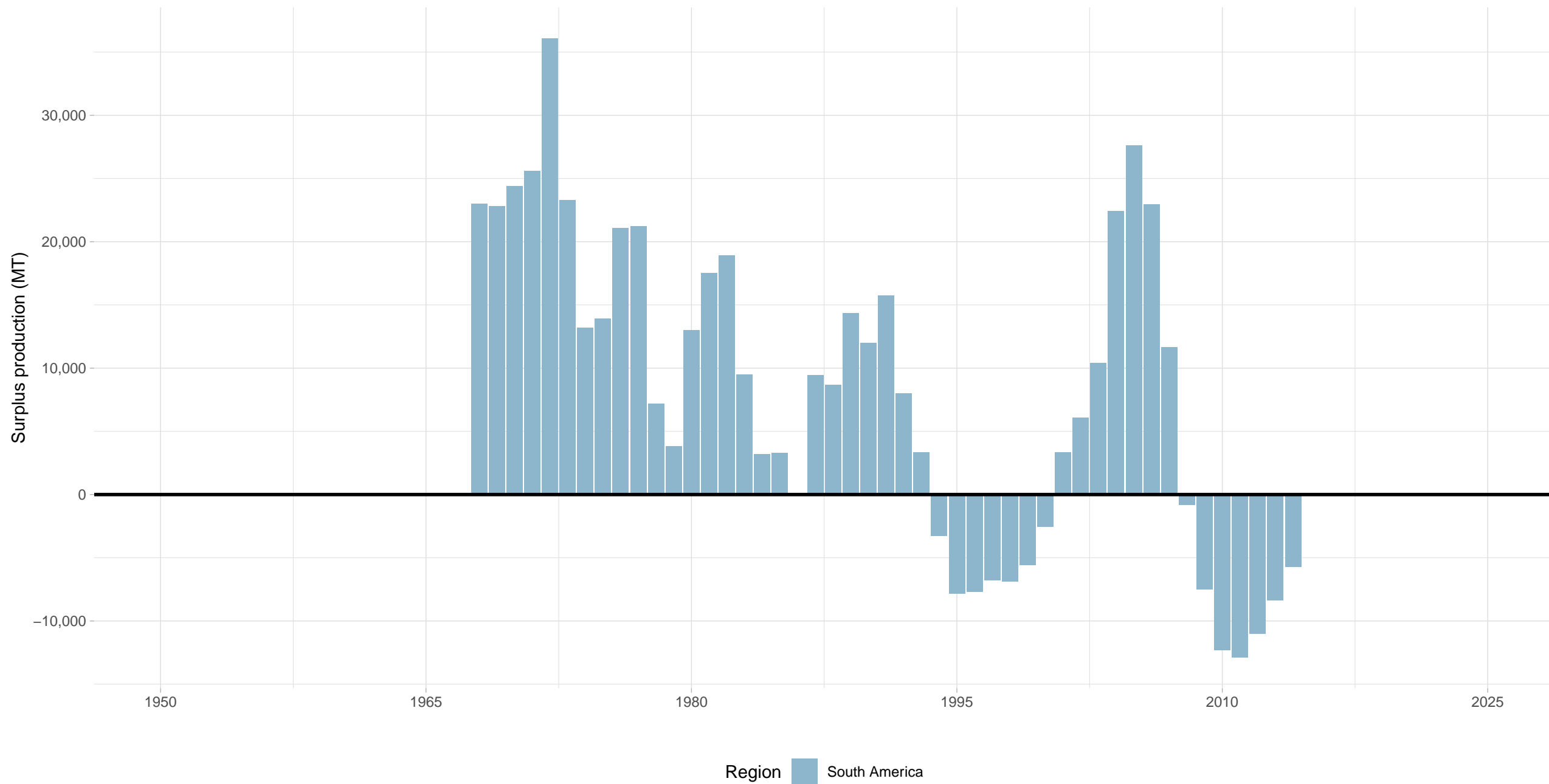
West coast rock lobster South Africa Area 7 – Crabs–Lobsters Taxonomy Group

Stock represents 2% of average absolute surplus production

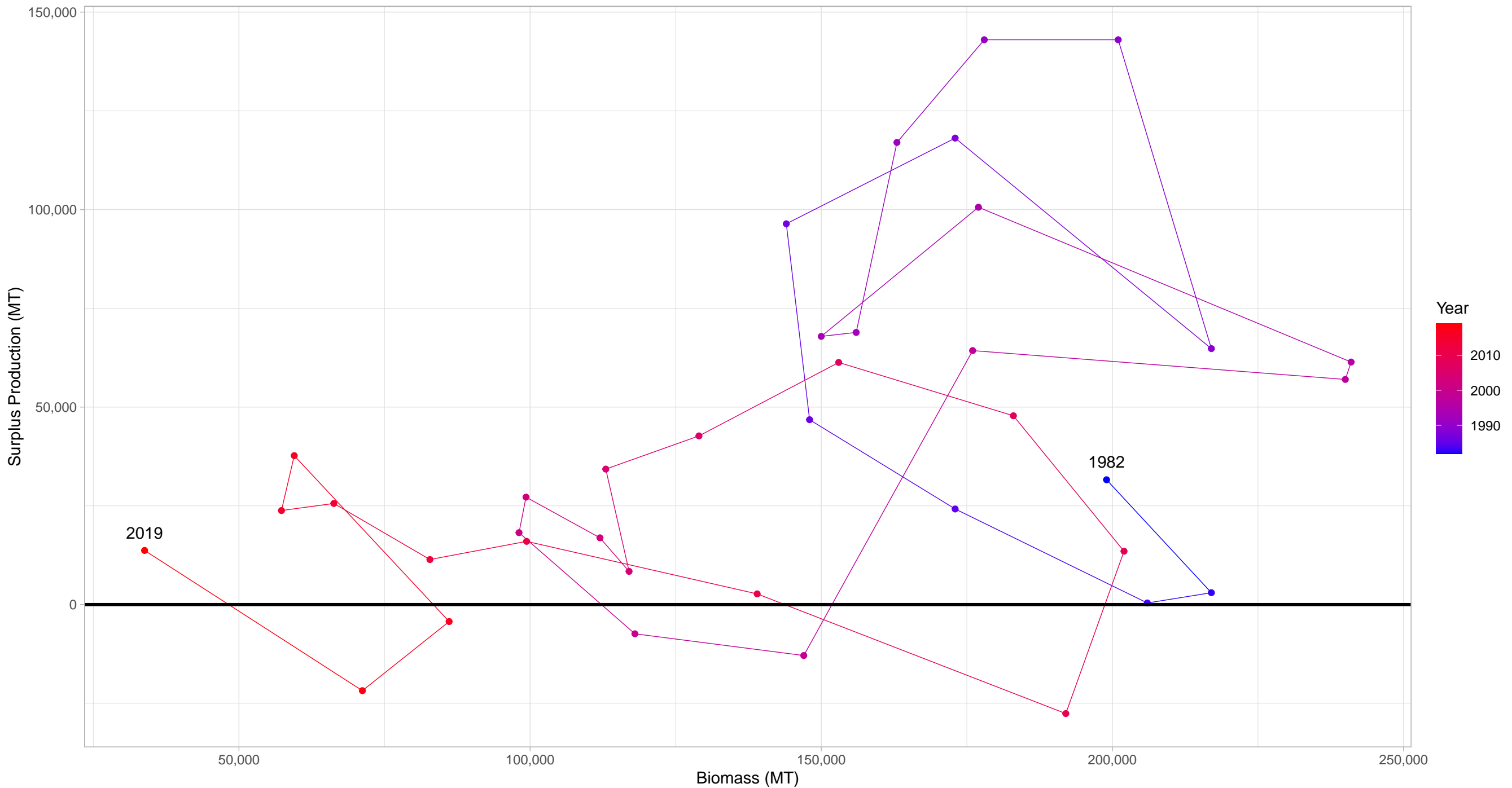


Red squat lobster Central–Southern Chile – Crabs–Lobsters Taxonomy Group

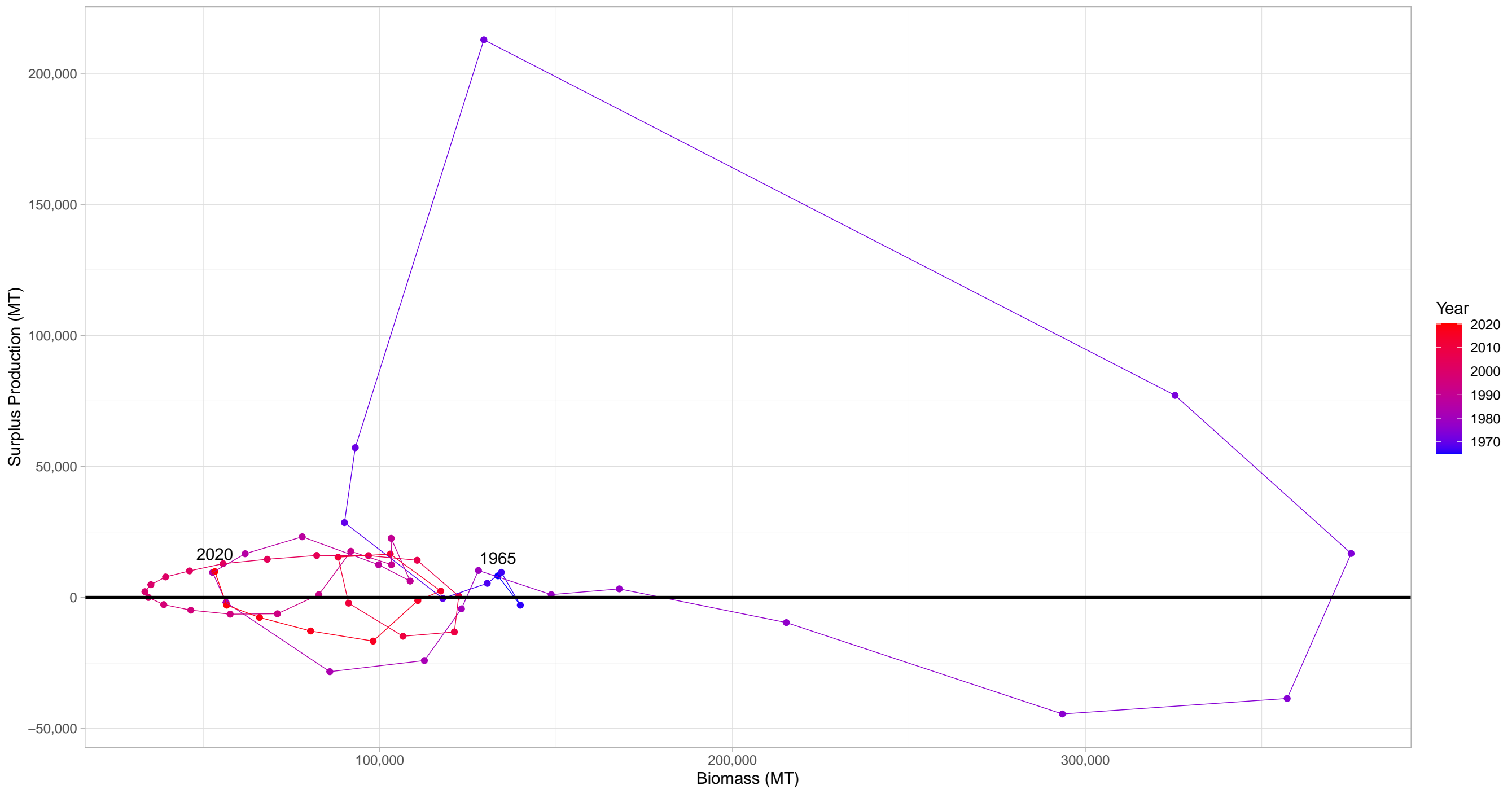
Stock represents 8% of average absolute surplus production



Snow crab Bering Sea in Crabs-Lobsters Taxonomy Group

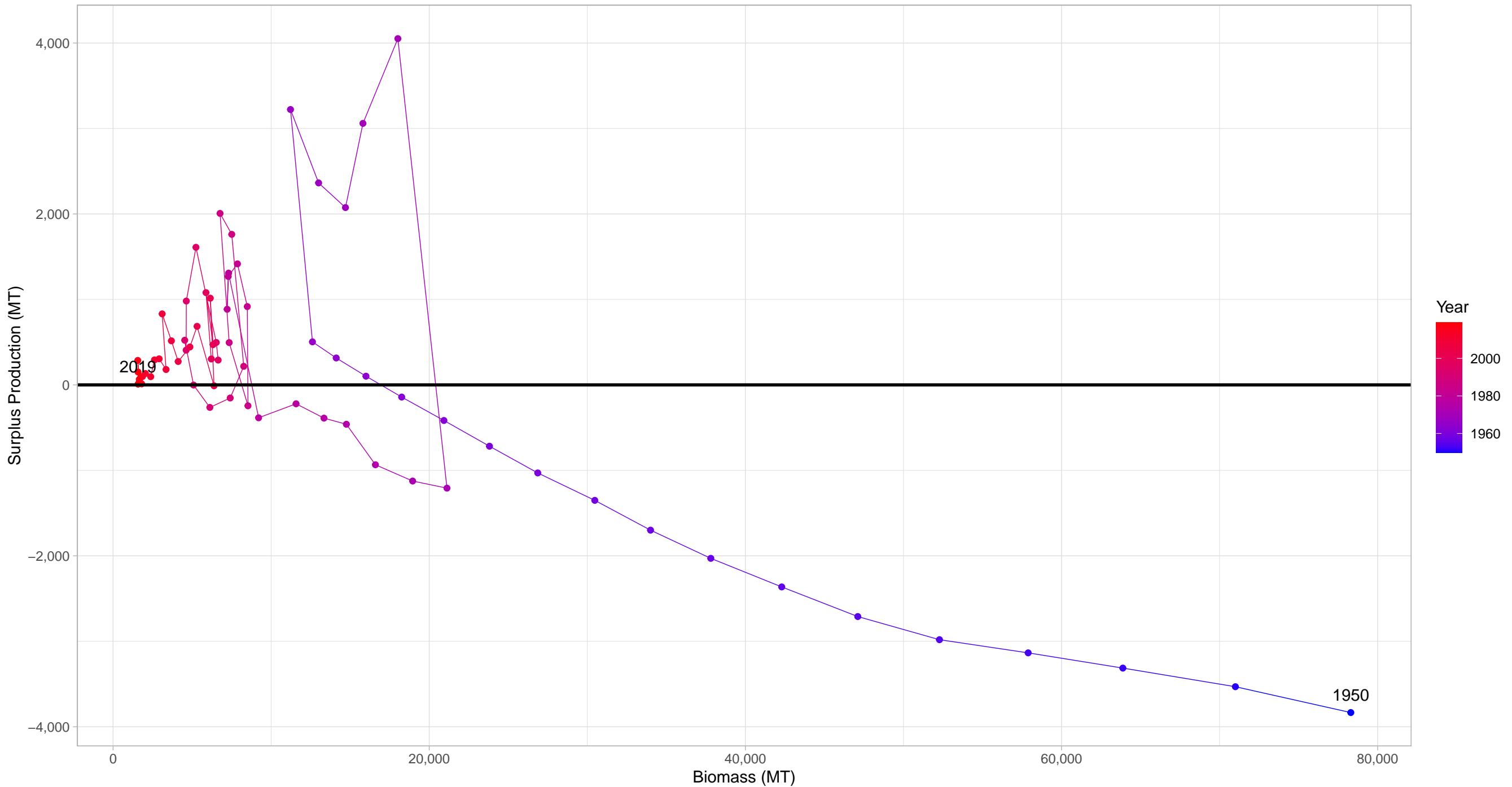


Tanner crab Bering Sea and Aleutian Islands in Crabs–Lobsters Taxonomy Group



First and last years with recorded surplus production are labeled

West coast rock lobster South Africa Area 7
in Crabs-Lobsters Taxonomy Group



First and last years with recorded surplus production are labeled

Red squat lobster Central–Southern Chile in Crabs–Lobsters Taxonomy Group

